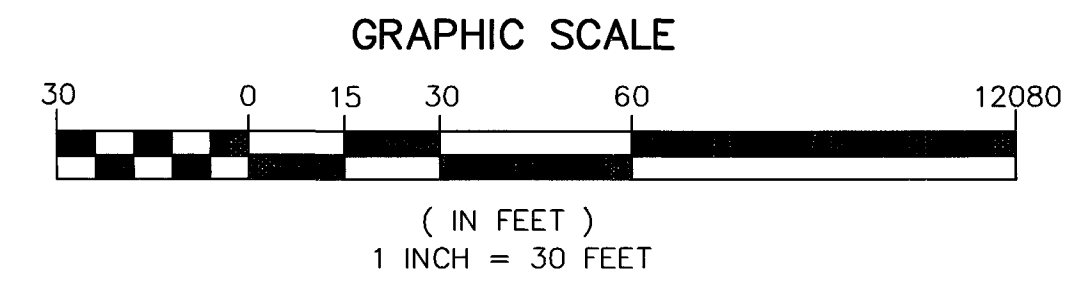
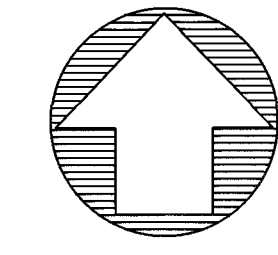
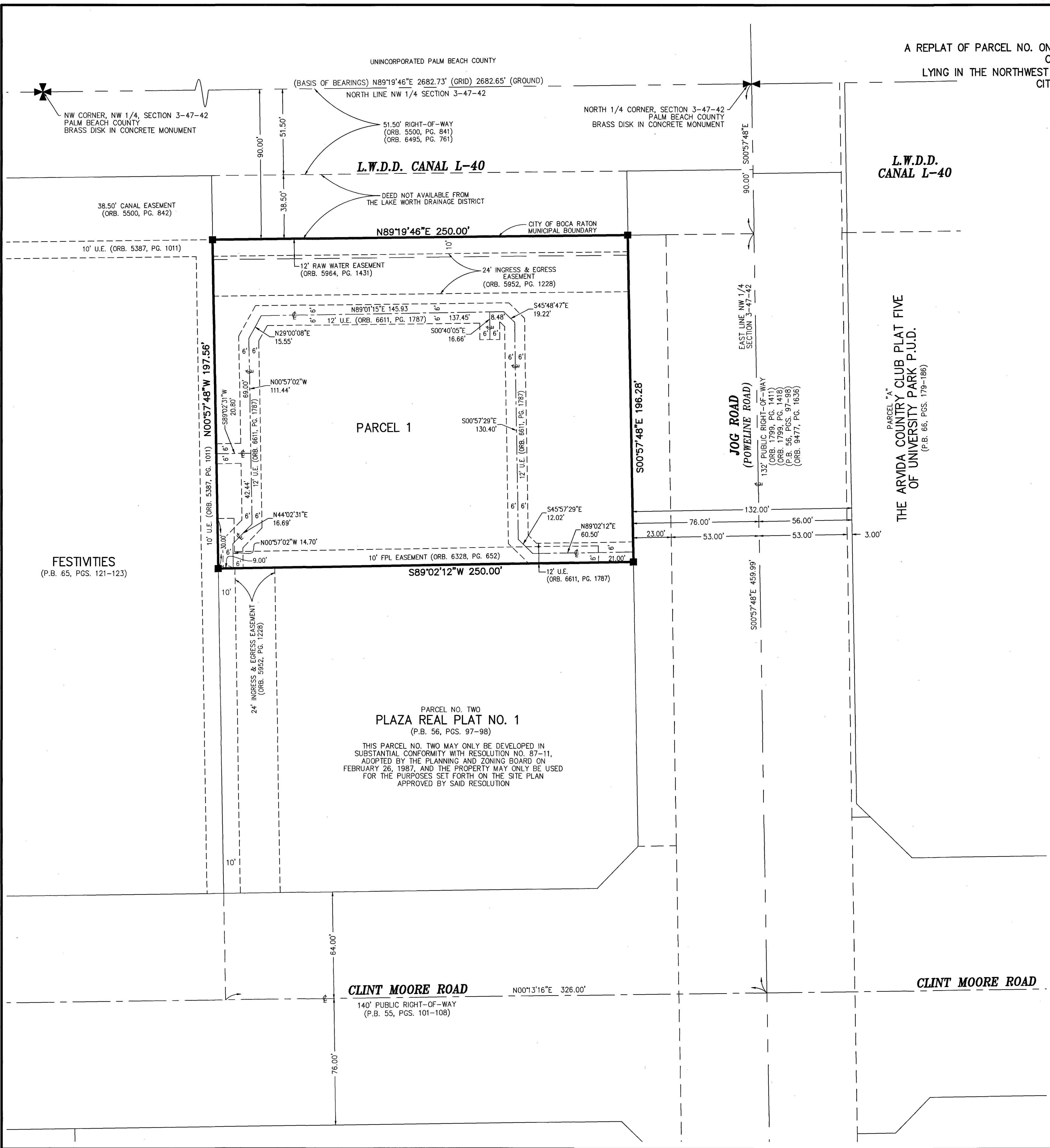


GENESIS

A REPLAT OF PARCEL NO. ONE, PLAZA REAL PLAT NO. 1, RECORDED IN PLAT BOOK 56, PAGES 97 AND 98 OF THE PUBLIC RECORDS OF PALM BEACH COUNTY LYING IN THE NORTHWEST QUARTER (NW 1/4) OF SECTION 3, TOWNSHIP 47 SOUTH, RANGE 42 EAST CITY OF BOCA RATON, PALM BEACH COUNTY, FLORIDA.

96

SHEET 2 OF 2



NOTES
COORDINATES, BEARINGS AND DISTANCES
BEARINGS SHOWN HEREON ARE GRID
DATUM = NAD 83 1990 ADJUSTMENT
ZONE = FLORIDA EAST
LINEAR UNIT = U.S. SURVEY FOOT
COORDINATE SYSTEM 1983 STATE PLANE
TRANSVERSE MERCATOR PROJECTION
ALL DISTANCES ARE GROUND UNLESS OTHERWISE NOTED
SCALE FACTOR = 1.000030698
GROUND DISTANCE X SCALE FACTOR = GRID DISTANCE
BEARINGS AS SHOWN HEREON ARE GRID DATUM
NAD 83 (1990 ADJUSTMENT), FLORIDA EAST ZONE
BEARING ROTATION FROM PLAT TO GRID IS 00°00'03" CLOCKWISE

LEGEND/ABBREVIATIONS:
FPL - FLORIDA POWER & LIGHT COMPANY
L.B. - LICENSED BUSINESS
L.W.D.D. - LAKE WORTH DRAINAGE DISTRICT
ORB. - OFFICIAL RECORD BOOK
P.B. - PLAT BOOK
PG(S). - PAGE(S)
PRM - PERMANENT REFERENCE MONUMENT
R/W - RIGHT-OF-WAY
U.E. - UTILITY EASEMENT
■ PRM - INDICATES PERMANENT REFERENCE MONUMENT
4"x4"x24" CONCRETE MONUMENT WITH DISK
STAMPED "PRM LB 3591", UNLESS OTHERWISE NOTED
CL - CENTER LINE

PARCEL NO. TWO
PLAZA REAL PLAT NO. 1
(P.B. 56, PGS. 97-98)
THIS PARCEL NO. TWO MAY ONLY BE DEVELOPED IN SUBSTANTIAL CONFORMITY WITH RESOLUTION NO. 87-11, ADOPTED BY THE PLANNING AND ZONING BOARD ON FEBRUARY 26, 1987, AND THE PROPERTY MAY ONLY BE USED FOR THE PURPOSES SET FORTH ON THE SITE PLAN APPROVED BY SAID RESOLUTION

THIS INSTRUMENT PREPARED BY
DAVID E. ROHAL
OF
CAULFIELD & WHEELER, INC.
SURVEYORS - ENGINEERS - PLANNERS
7900 GLADES ROAD, SUITE 100
BOCA RATON, FLORIDA 33434 - (561) 392-1991